



Ardwyn

Buzza Steet, St Mary's, TR21 0JP



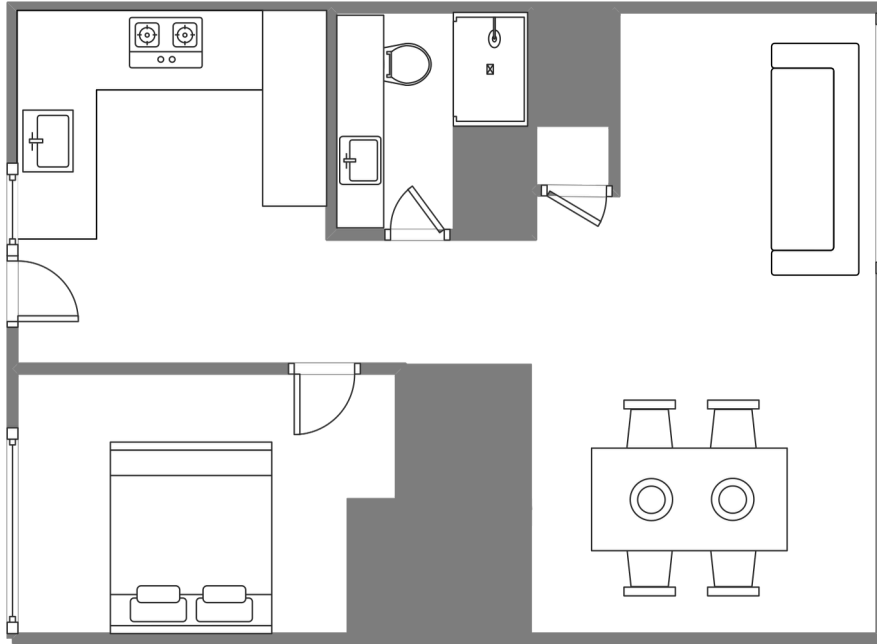
Sleeps 2 | Thursday Change over

- Double Arrangement
- Laundry Facility
- Internet Access
- Outside seating area
- Convenient location for beaches and Quay

Ardwyn is a sunny, light, ground floor flat sleeping 2 people. The situation is ideal, just a five minute level walk from the centre of Hugh Town and its shops, and only a further few minutes from the Quay. A 50 metre walk will take you to the lovely sandy beach at Porthcressa, and access to stunning coastal walks.

The flat offers accommodation of a very high standard. The kitchen is well equipped offering all that you will need during your stay - a washing machine is provided, plus outside drying facilities are also available. The bathroom has a modern bathroom suite with walk in shower. The lounge is large, light and airy - offering comfortable seating, dining area, large flat screen TV, and radio/CD player. A pleasant secluded courtyard with seating is also offered for the use of our guests.

Layout



Getting to the property

Map of St Marys



Directions from the Quay | Walking time: 15 minutes

Head towards the entrance to the quay. Turn left at The Mermaid Inn on to Hugh Street. Keep to the right side of the road.

Follow the main road past Town Hall, towards Methodist Church.

On church Road, opposite old museum, go right. Approx. 30-40 meters in, there will be wooden gate on your right.

Enter wooden gate, door opens to the front patio and entrance door to Ardwyn is on the left.

What3words///nudge.hoping.twilight

Scilly Self Catering
Lower Strand
Isles of Scilly, TR21 0PS

Enquiries@scillyselfcatering.com
01720 422082
www.scillyselfcatering.com